



NIHR Greater Manchester CLRN Monthly Update – October 2009

If you wish to have anything included in future updates, please contact Aaron Gow aaron.gow@manchester.ac.uk or 07912 394 016.

ANNUAL REVIEW

The Network had its annual review in September and we are pleased to report that we are considered 'Green - network fully established and all aspects functioning well', the highest rating possible. The review letter, from Stephen Smye and Jonathan Gower said: "Overall, progress over the last year has been impressive and we would like to thank you for the commitment and dedication you have shown which has led to the CCRN CLRN being established well within the timelines set out in the NIHR Implementation Plan."

NORTH WEST EXEMPLAR PROGRAMME UPDATE

The North West Exemplar Programme has moved into its next phase with the first two studies receiving NHS Permission. A further six studies have submitted their R&D Forms and three of these have also started to submit SSIs. Greater Manchester is the lead CLRN on three of these studies. There are a further 19 studies in the pipeline. More information on the programme can be found at: www.crcc.nihr.ac.uk/index/industry/nwexemplar.html

PATIENT ENGAGEMENT EVENT – 27 NOVEMBER

On 27 November the GMCLRN will be hosting a Patient Engagement event to raise awareness of Greater Manchester NHS research with the general public. The event will hear from a number of speakers on: the importance of research in improving NHS patient care; key areas of research in Greater Manchester; and a patient's perspective of taking part in research. The event is being held at Hulme Hall, Victoria Park Campus, University of Manchester and is from 9.00am – 4.00pm. To register for the event contact Justine at Hartley Taylor, tel: 01844 275 650 or email: justine@hartleytaylor.co.uk

UPDATE ON CSP

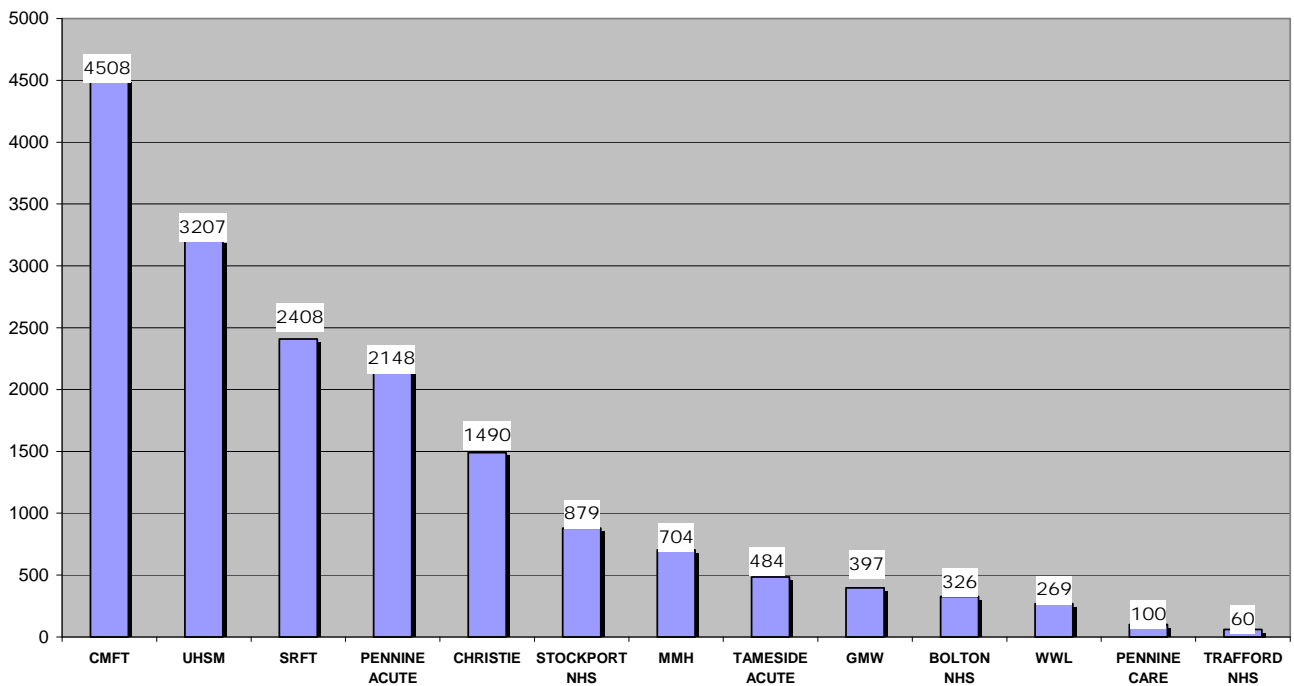
There are currently 191 studies within CSP for Greater Manchester. This gives a total of 344 approvals to be completed by Trusts through CSP.

NHS Organisation	Total (including +/- studies)	Position This Month (last month)
ReGroup (10 GM PCTs)	75 (+8)	1 (1)
Central Manchester University Hospitals Foundation	61 (+10)	2 (2)
Salford Royal Foundation Trust	44 (+4)	3 (3)
Christie Hospital Foundation Trust	34 (+8)	4 (4)
University Hospital of South Manchester Foundation Trust	24 (+12)	5 (5)
The Pennine Acute Hospitals Trust	18 (+4)	6 (6)
Wrightington, Wigan and Leigh Foundation Trust	14 (+7)	7 (11)
Royal Bolton Hospital Foundation Trust	13 (+5)	8 (10)
Manchester Mental Health & Social Care Trust	12 (+1)	9 (7)
Trafford Healthcare Trust	12 (+2)	10 (8)
Stockport Foundation Trust	11 (+2)	11 (9)
Greater Manchester West Mental Health Foundation Trust	9 (+1)	12 (12)
Tameside Hospital Foundation trust	7 (+1)	13 (13)
Pennine Care Foundation Trust	6 (+1)	14 (14)
Greater Manchester	344 (+57)	

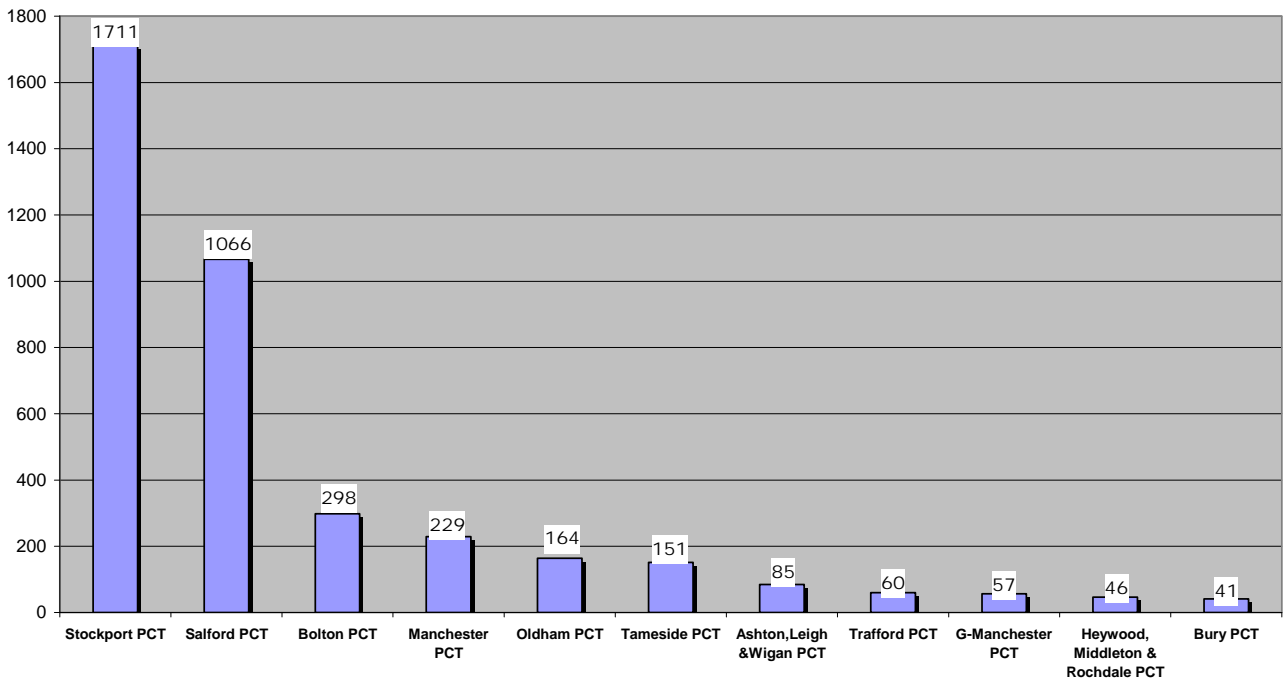
GMCLRN Contact Details

Martin Gibson	Director	martin.gibson@manchester.ac.uk	0161 291 5888
Julia O'Toole	Senior Manager	julia.o'toole@manchester.ac.uk	0161 291 5910
Jane Pearson	Lead RM&G Manager	jane.pearson@manchester.ac.uk	0161 291 5878
Mark Sidaway	Information Manager	mark.sidaway@manchester.ac.uk	0161 291 5886
Paul Hedgeland	Industry Manager	paul.hedgeland@googlemail.com	0161 291 5887
Craig Johnson	Portfolio Officer	craig.johnson@manchester.ac.uk	0161 291 5889
Ann Lundy	PA/Administrator	ann.lundy@manchester.ac.uk	0161 291 5888
James Garner	Assistant Administrator	james.garner@manchester.ac.uk	0161 291 5881

GMCLRN - Total accrual by Trust 1st April 2008 - 19th October 2009



GMCLRN - Total accrual by PCT 1st April 2008 - 19th October 2009



GMCLRN - Total accrual by LPG 1st April 2008 - 19th October 2009

